

SimmStick is a modular Printed Circuit Board System for single chip microcontroller, but not limited to that. The various modules are interconnected through a 30-pin bus, call the SimmBus. The readily available and fully tested modules allow for fast and easy development and prototyping. It also allows for full hands-on.

Because of the modular nature, technical schools and universities find SimmStick useful in teaching electronics, useful for students to do hands-on, and useful for project building. Every module developed is not wasted because it can be reused in the next projects. Many objectives are accomplished on the same platform and that translated into savings in cost and time. With SimmStick, students can learn a lot and accomplish a lot in a typical tight course schedule.

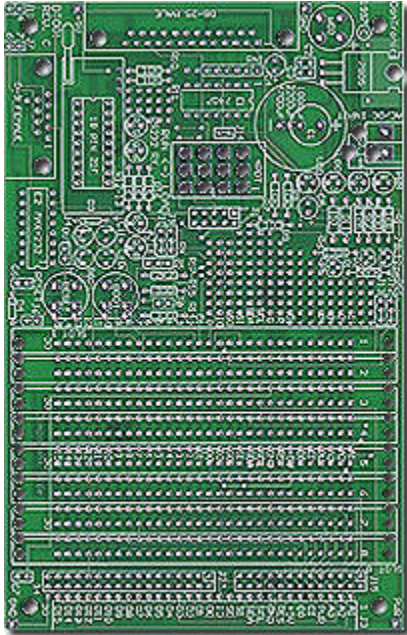
Apart from school applications, SimmStick is also used in projects development in commercial companies. They are also used to do low-volume production of electronics system.

The modules available are increasing. There is worldwide dealers distributing and supporting SimmStick, their web-site is at <http://www.simmstick.com>.

*** SimmBus – it connects the modules through a 30-pin bus mainly for interconnection purposes for the IO signals and interface signals. Through that interface, modules can be snapped on fast n easy.

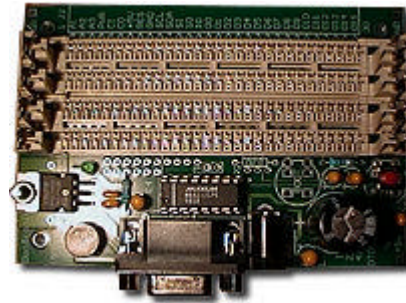


Development Platform - Simmstick and PIC

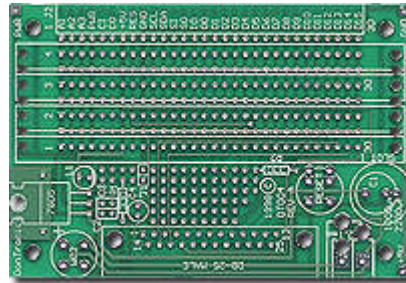


DT001
SimmStick PIC development system and programmer

DT005 – in development
The DT005 board is 4" by 4.75" and will allow for 14 slots, and provision for a 30 pin male right angle input header on the left hand end, and a female right angle output header on the right hand end of the board.



DT003
Power supply, RS-232 comms, and mini-bus platform



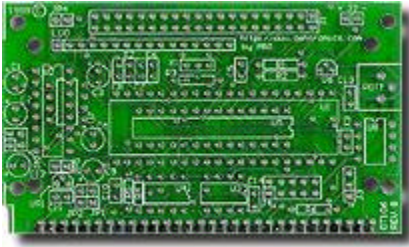
DT004
Power supply, Parallel Printer Port, and mini-bus platform



Microchip PIC Microcontroller SBC – PicStic like

NEW DT106 NEW

28/40 Pin PICmicro on a SimmStick



DT106.



DT106 with 16F877, EEPROM, RTC, RS-232 and LCD

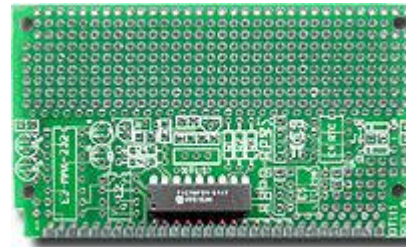


DT101 -For 18 pin PIC

Support PIC16C5X & PIC16C6X DIP18 - 52, 54, 56, 58A, 554, 556, 558, 61, 620, 621, 622, C83, C84, F84

DT102- Picture not ready

DT102 is PIC based Simmstick board that has RS232/RS485, Serial LCD provision, PC AT keyboard DIN, PS2 DIN, switches and LEDs. It is suitable as a mini-terminal. This is a 2.65 Inch Board, though it is called a 2.5 inch platform.



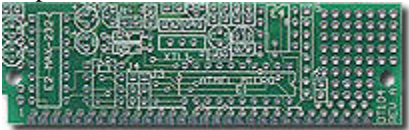
NEW DT111 NEW

An DT101 with additional 1" prototyping space

Atmel Microcontroller SBC

DT104

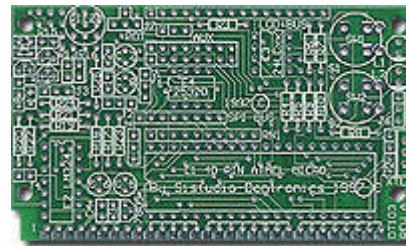
Atmel AVR AT90S1200 and 8051 Compatible
20 pin SBC



DT104 with AT89C2051, EEPROM and RS-232.



DT104 with Atmel AT90C1200.

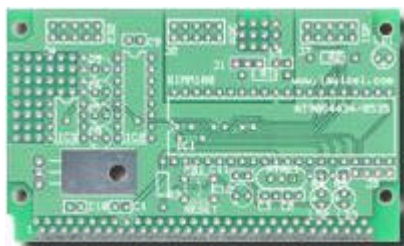


DT103

Atmel AVR 40 pin SBC

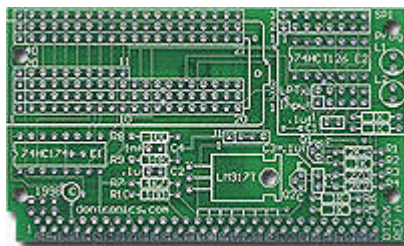
DT105 – In Development

Atmel AVR AT90S2333 and 4333 Compatible SBC



NEW

SIMM100
AT90S8535, MAX232, MAX701, Reset button and IDC connectors for RS-232, ADC and ISProgrammable

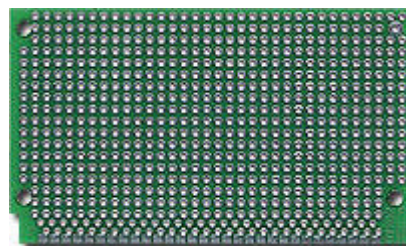


DT206
AT89C2051 Programmer and SPI Flash Programmer

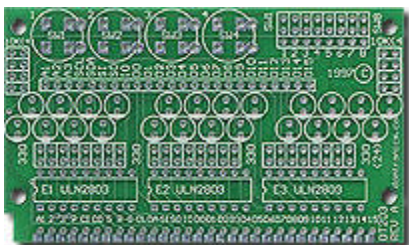
Expansion & Misc Modules



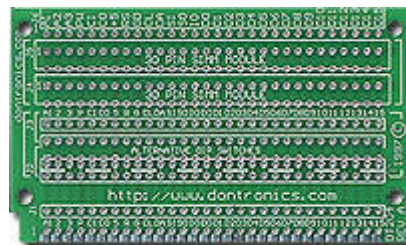
DT201
1" Prototype board



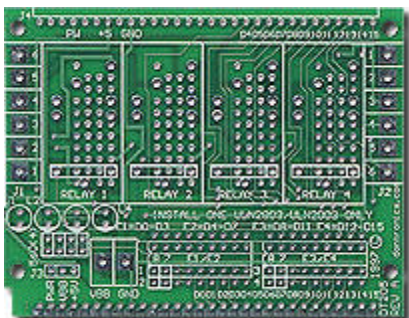
DT202
2" Prototype board



DT203
24 LEDs, 4/8 Switches



DT204
Signal Expansion Board



DT205
Relay Board

DT207 – In Development

The DT207 Power Supply and RS-232 SimmStick. It is a 1" SimmStick. Use with DT005.